



Green Design as Systemic Practice

- Environmental Council
- Office of Environmental Affairs
- Environmental Design consultant
- Environmental Policy
- Project Review Committee
- Guiding Principles
- Engaged Staff, Faculty & Students
- Carbon Reduction Initiative

Environmental Policy

Middlebury College as a liberal arts institution is committed to environmental mindfulness and stewardship in all its activities. This commitment arises from a sense of concerned citizenship and moral duty and from a desire to teach and lead by example. The College gives a high priority to integrating environmental awareness and responsibility into the daily life of the institution. Respect and care for the environment, sustainable living, and intergenerational responsibility are among the fundamental values that guide planning, decision making, and procedures. All individuals in this academic community have personal responsibility for the way their actions affect the local and global environment."

Adopted by Trustees, May 1995

BICENTENNIAL HALL - 2000





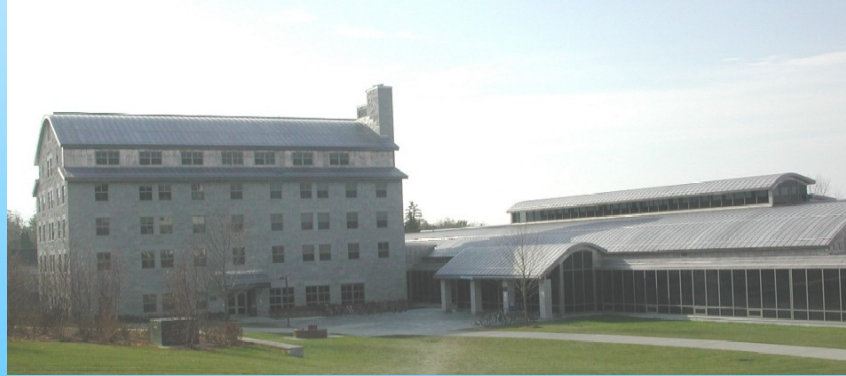
Guiding, Planning and Design

In building design and construction, the College shall consider: energy systems, life cycles, water use, scale and location, light pollution, recycling and waste management, materials, community and product sources, transportation, aesthetics, indoor air quality, construction site management, open space and other issues related to the campus.



***Adopted by Trustees
June 1995***

LAFORCE HALL AND ROSS DINING - 2002





OLD SCIENCE CENTER - 2001



OLD SCIENCE CENTER DECONSTRUCTION - 2001

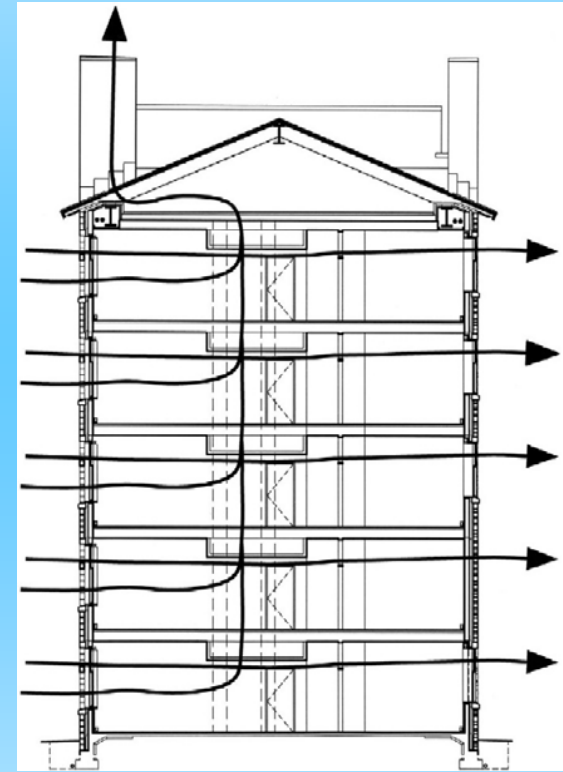
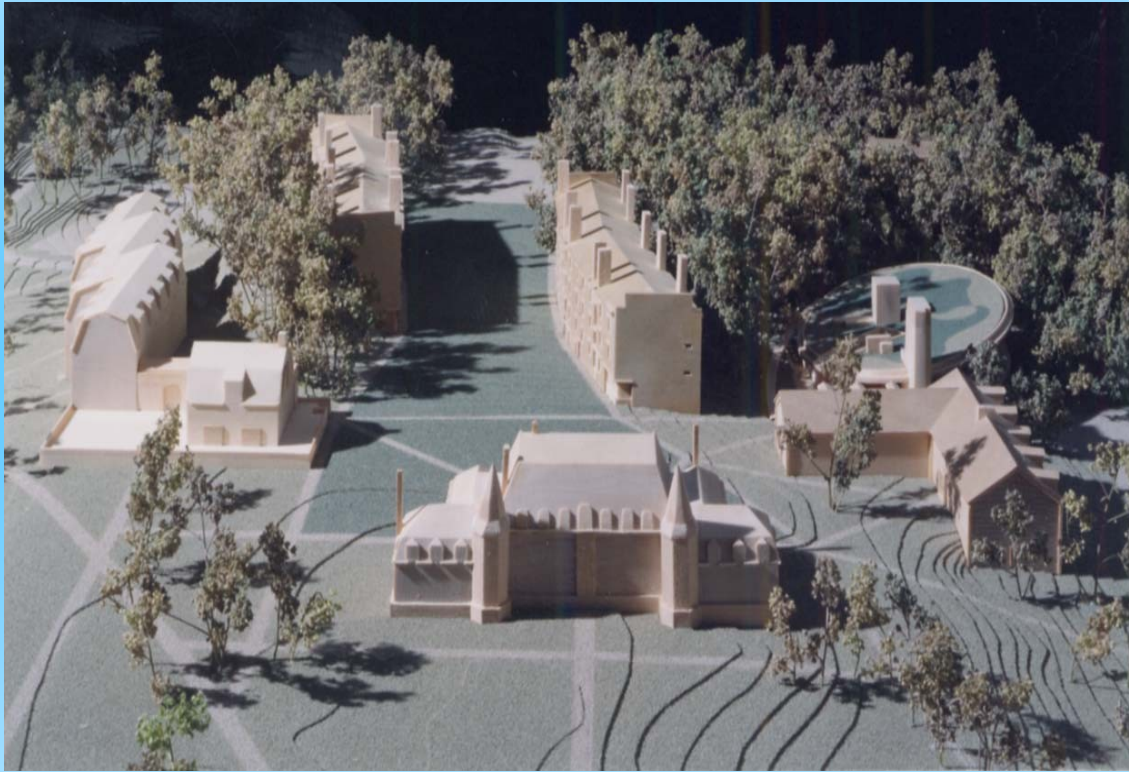
Materials Reclaimed	Quantity Reclaimed (Tons)	Percentage
Equipment & Building materials salvaged*	10.00	1%
Concrete and glass (crushed)	650.00	47%
Light mixed iron	178.80	13%
Steel (rebar)	368.50	27%
Wood	48.30	3%
Copper	7.85	0.5%
Aluminum	2.20	negligible
Brass	.08	negligible
Stainless Steel	12.30	1%
Limestone	76.00	5%
C&D debris (landfilled)	36.50	2.5%
TOTAL	1390.53	100%
Total Reclaimed	1354.03	97.4%

*estimated

NEW LIBRARY – Current Construction



ATWATER COMMONS - 2004



ATWATER COMMONS – Residence Hall – Current Construction



ATWATER COMMONS - Dining Hall



Core Elements of Sustainable Design Process

- Priority of Leadership
- Responsible Entity to Chart Course
- Collaboration
- Performance Goals
- Innovation
- Integration





Connie Leach Bisson

Campus Sustainability Coordinator

Middlebury College

Farrell House

Middlebury, Vermont 05753

802 443-5043

cbisson@middlebury.edu

www.middlebury.edu/offices/enviro

http://www.middlebury.edu/offices/enviro/initiatives/green_wood/green_building/

