



Strategies to Reduce Contamination at a Large - Scale Composting Facility



Erin Skelly
Environmental & Compliance Technician

952.233.9191 • SMSCORF.COM
1905 MYSTIC LAKE DRIVE S, SHAKOPEE, MN

OWNED AND OPERATED BY THE SHAKOPEE MDEWAKANTON SIOUX COMMUNITY



Background - SMSC Organics Recycling Facility

- Shakopee Mdewakanton Sioux Community (SMSC)
- Shakopee, MN
- Opened in 2011
- 70,000 tons of material per year





Accepted Materials

Incoming Material

- Food Waste
- Compostable Products
- Yard Waste
- Wood
- Horse Manure



How to Reduce Contamination?



Strategy 1: Education



Acceptable Items Vs. Contamination



Acceptable Materials

- Food
- Food Soiled Paper Products (Napkins, paper towels, cardboard)
- BPI Certified Compostable plates, bowls, silverware, cups, containers.
- Chopsticks, popsicle sticks, toothpicks
- Yard Waste (grass, leaves, brush, plant clippings)
- Natural Wood Waste (trees and brush)





Non-Acceptable Materials

- Glass
- Metal
- Plastic



Non-Acceptable Materials – Common

- Cartons (Milk, Broth, Juice)
- Refrigerated and Frozen Food Boxes
- Fast Food Wrappers
- Microwave Popcorn Bags
- Take Out Containers





Non-Acceptable Materials

- Chewing Gum
- Cat/Dog Waste or Litter
- Diapers or Feminine Products
- Cleaning or Baby Wipes
- Painted, treated, or glued wood products
- Fireplace or BBQ Ashes



Strategy 2: Load Inspections

Unacceptable materials include:

- Glass
- Metal
- Plastics



- Front End Loader/Long handled hooks
- 5% contamination threshold







Compostable Products

- Can make inspections more challenging



Misleading Products

- Biodegradable does not mean compostable
- Sustainably sourced
- Ecofriendly
- From sustainably managed forests
- Renewable Resource
- Marine biodegradable



I'M **NOT** COMPOSTABLE

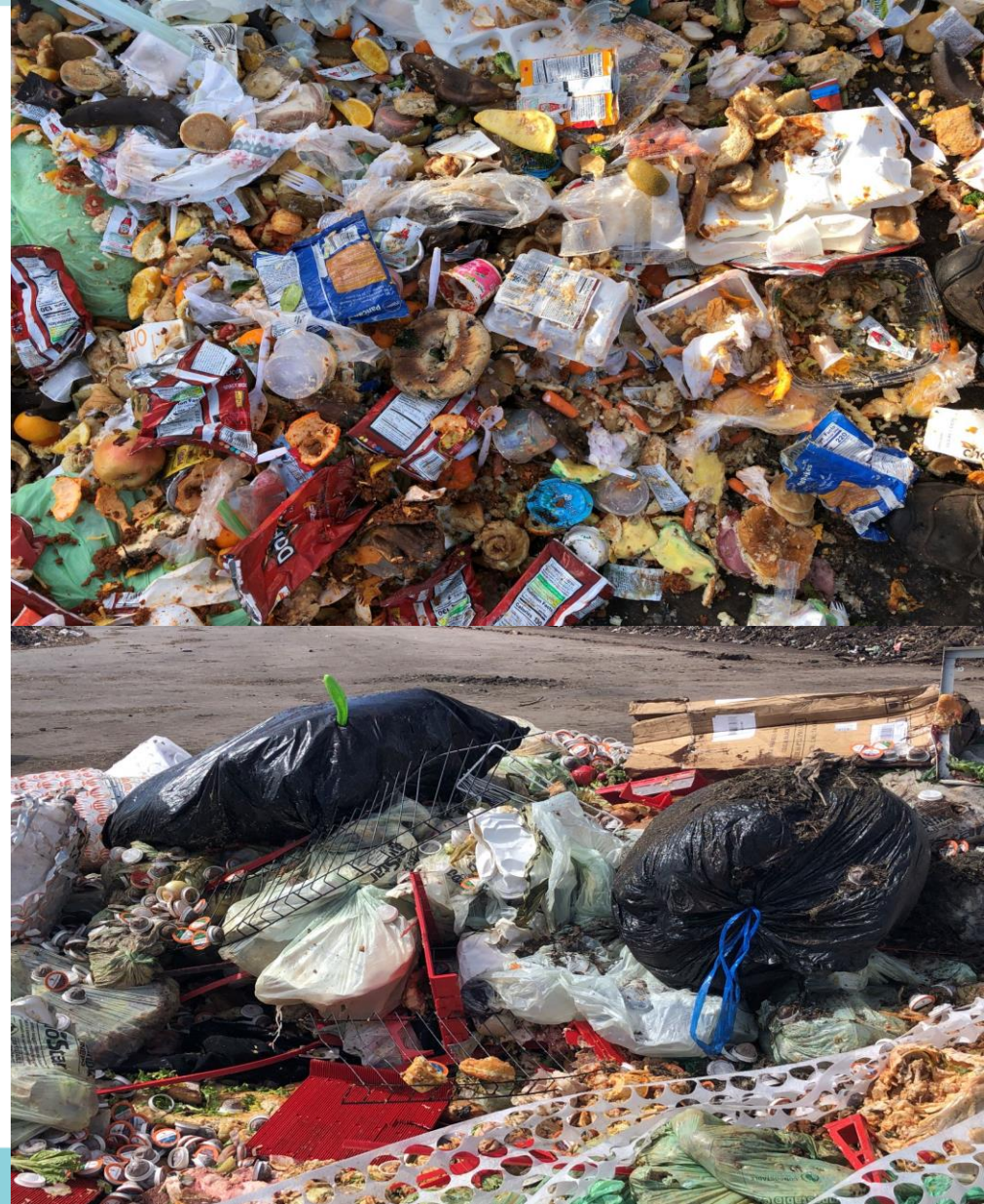


Know your labels - **oxodegradable**, **biodegradable**, **eco-friendly**, and **all natural** are not standards and can be very misleading.

Jeffries

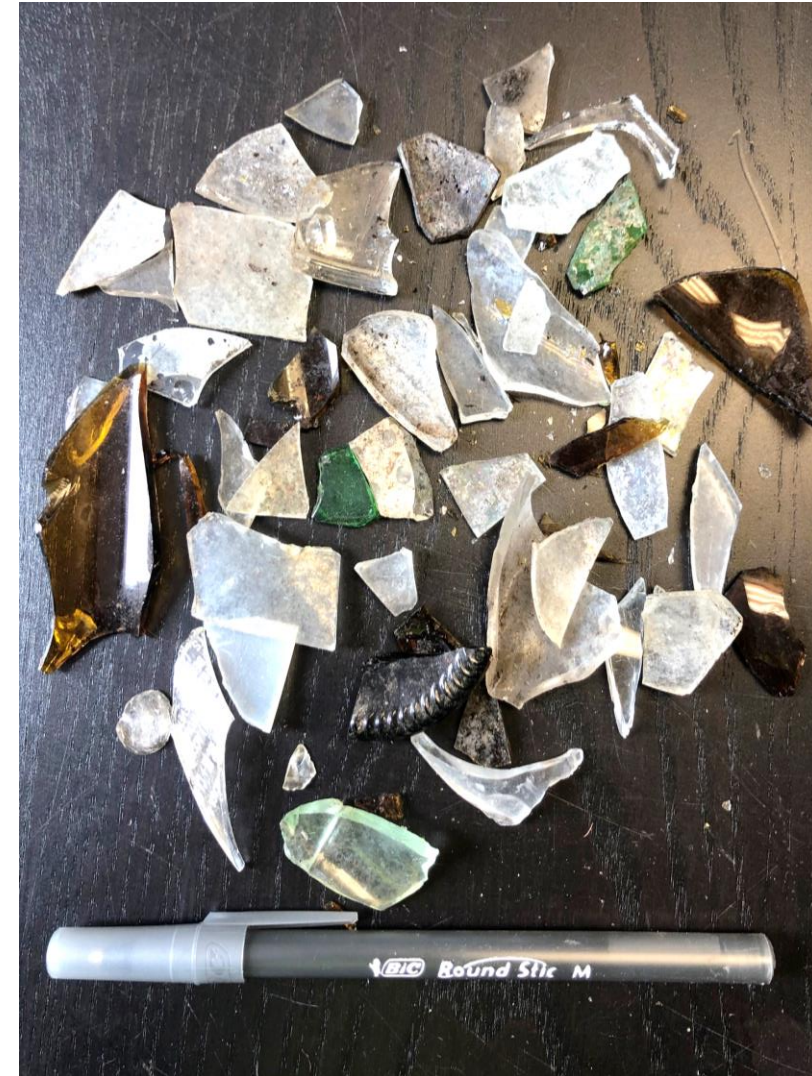
not microwaveable | caution: contents may be hot
Contains fiber sourced from sustainably managed forests

Contaminated Loads



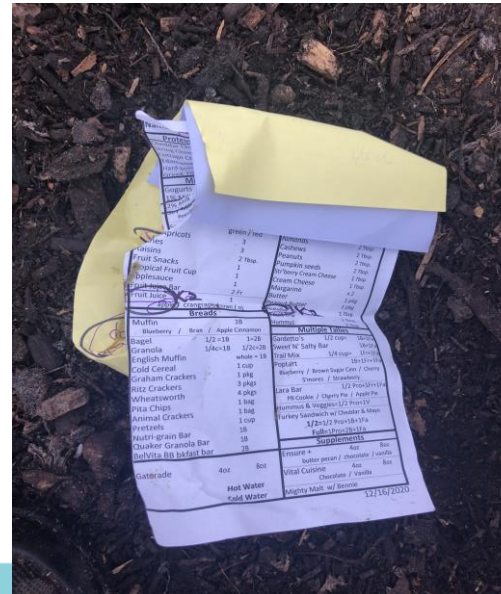


Contamination is not created equal



Strategy 3: Working With Haulers

- All contamination feedback is with haulers
 - Description, photos, identifiers
- Load feedback
 - Description, photos, identifiers
- Require: meeting with haulers, facility tour





Tracking Contamination

Search Files and Folders

All Files > Load Inspections > 2020

Sort by Updated

FOLDERS

Hennepin Jan 13, 2021 by Erin Skelly 288 Files	Vierkant Jan 13, 2021 by Erin Skelly 68 Files	Sanimax Jan 13, 2021 by Erin Skelly 261 Files
Republic Jan 13, 2021 by Erin Skelly 432 Files	Republic - Hennepin Jan 4, 2021 by Erin Skelly 115 Files	Randy's Blue Bag Dec 30, 2020 by Erin Skelly 53 Files
Organix Dec 29, 2020 by Ana Hoffman 7 Files	Mystic Casino Dec 28, 2020 by Ana Hoffman 228 Files	Little Six Dec 28, 2020 by Ana Hoffman 88 Files
Public Works Dec 23, 2020 by Erin Skelly 16 Files	DSI Dec 18, 2020 by Ana Hoffman 285 Files	LJP Dec 15, 2020 by Ana Hoffman 55 Files
WM - Gustavus Dec 10, 2020 by Erin Skelly 9 Files	Potato Clean out Dec 1, 2020 by Erin Skelly 2 Files	Waste Management Oct 30, 2020 by Ana Hoffman 28 Files
Canterbury Aug 31, 2020 by Ana Hoffman 4 Files	Mystic Lake Convention Center (MLC) Mar 4, 2020 by Ana Hoffman 10 Files	Lakers Mar 3, 2020 by Ana Hoffman 41 Files
Mystic Center Feb 19, 2020 by Ana Hoffman 18 Files		

- Load inspection photos stored in online Box account
- Provides a record of progress and helps identify recurring issues

Questions?

Erin Skelly
Erin.Skelly@ShakopeeDakota.org

